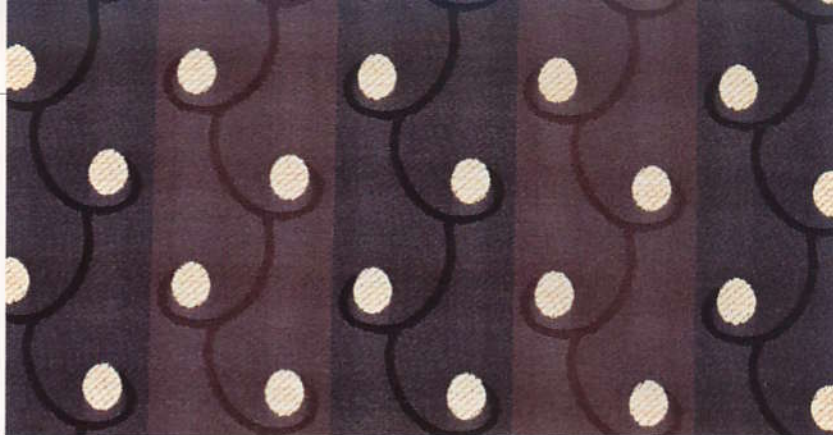


## chella textiles

**Scroll Modernes** isn't just about lively dots and shapely curves—the background's tonal stripes add a layer of subtlety. Overall, the fabric is a robust acrylic jacquard. The white spots are bouclé and chenille yarns.

32 Anacapa Street, Santa Barbara, CA 93101; 805-560-8400; chellatextiles.com. **circle 354**



## jofco

Floating tops, tapered supports, and an airy interrelation of forms characterize **CX** case goods produced by Frezza. The work surfaces, tables, storage components, and bookcases are offered in three finishes—light walnut, rosewood, and black ash—and detailed with extruded aluminum and leather. P.O. Box 71, Jasper, IN 47547; 800-235-6326; jofco.com. **circle 355**



## heller

From Bilbao, Spain, to Tiffany & Co., Frank Gehry is everywhere. Offered in automotive paint, the architect's new rotation-molded polymer

**Ultracubes** differ from his 2004 polymer versions, but both flaunt his signature rejection of orthogonality in favor of sculpturally torqued silhouettes. 149 Fifth Avenue, 3rd Floor, New York, NY 10010; 212-685-4200; helleronline.com. **circle 356**

## arcadia

It's hard to keep quiet about **Hush** modular seating. Dainty aluminum legs almost make the pieces float, while custom-upholstered 45½-inch-high backs create intimacy in the most open of spaces. A low-backed version, just 31 inches tall, comes with integrated side tables. 5692 Fresca Drive, La Palma, CA 90623; 800-585-5957; arcadiacontract.com. **circle 357**



## convia

This manufacturer is all about the hookup—the electronic one, that is. An alternative to hardwiring, **Programmable Infrastructure** routes power through an open grid or modular system of galvanized-steel rails, so lighting and power sources can be programmed to respond to a two-button remote wand or a command from a Web portal. 855 East Main Avenue, Zeeland, MI 49464; 800-507-1124; hmconvia.com. **circle 358** →