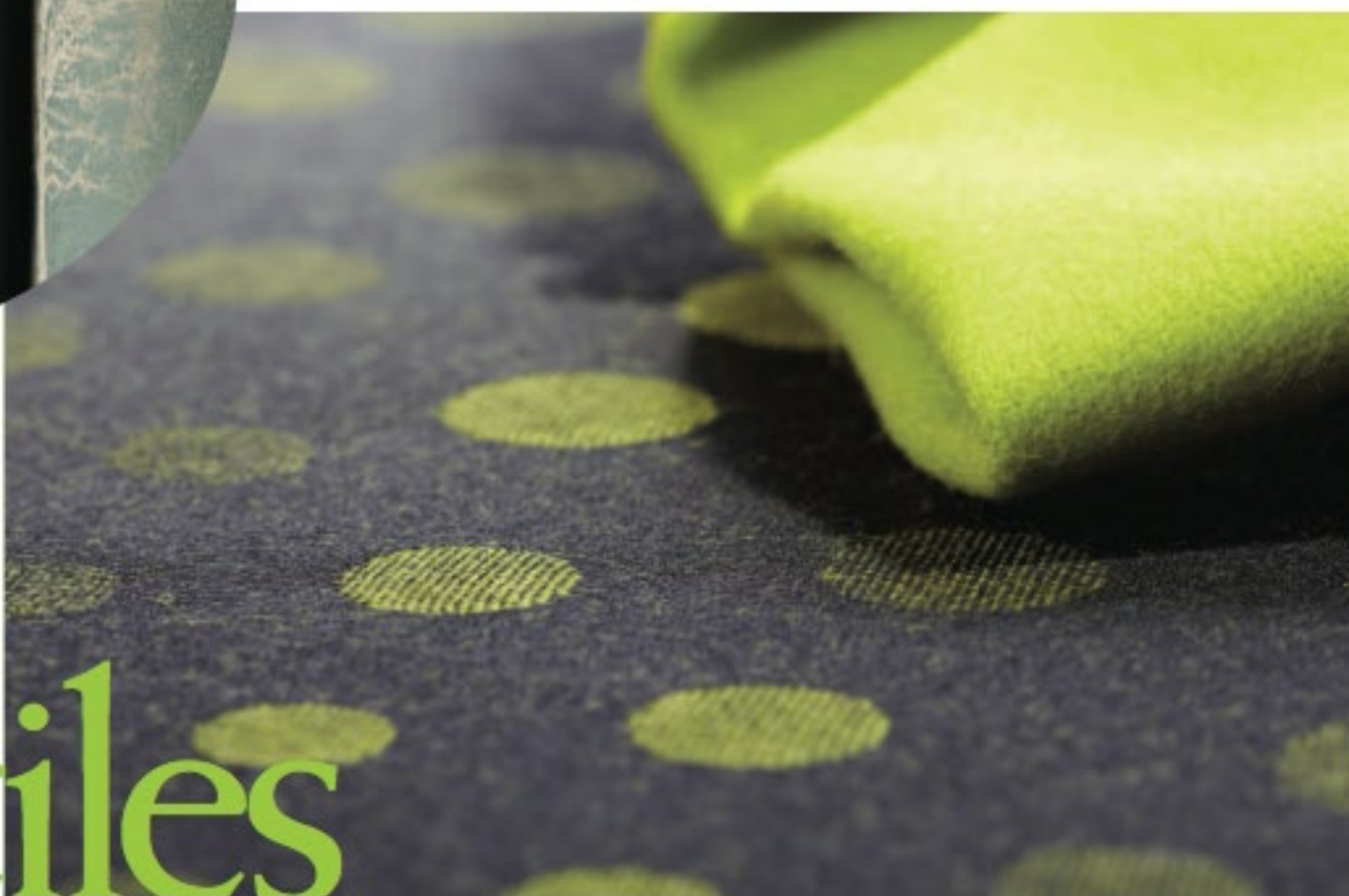




**HBF Textiles'**

"Breaking Monotony" is a diverse collection of multipurpose materials that breaks conventional ideas of vertical materials and upholstery fabrics. This series is comprised of five core patterns and 40 colorations that range from invigorating, fresh hues to grounded neutrals. The fibers are primarily comprised of post-consumer recycled polyester, which are certified by C2C MBDC Gold and Oeko-Tex®, the European environmental standard.

Smarty by **Camira** is a fun, funky, fashionable fabric whose design revolves around a cascade of tumbling circles in fluid, rhythmic motion. Drawing on optical art inspirations, Smarty cleverly combines scale, movement, color and dimension to create an iridescent fabric which brings furniture to life and coordinates perfectly with Camira's felted wool Blazer fabric to allow freedom of expression and creative combinations of complementary fabrics.

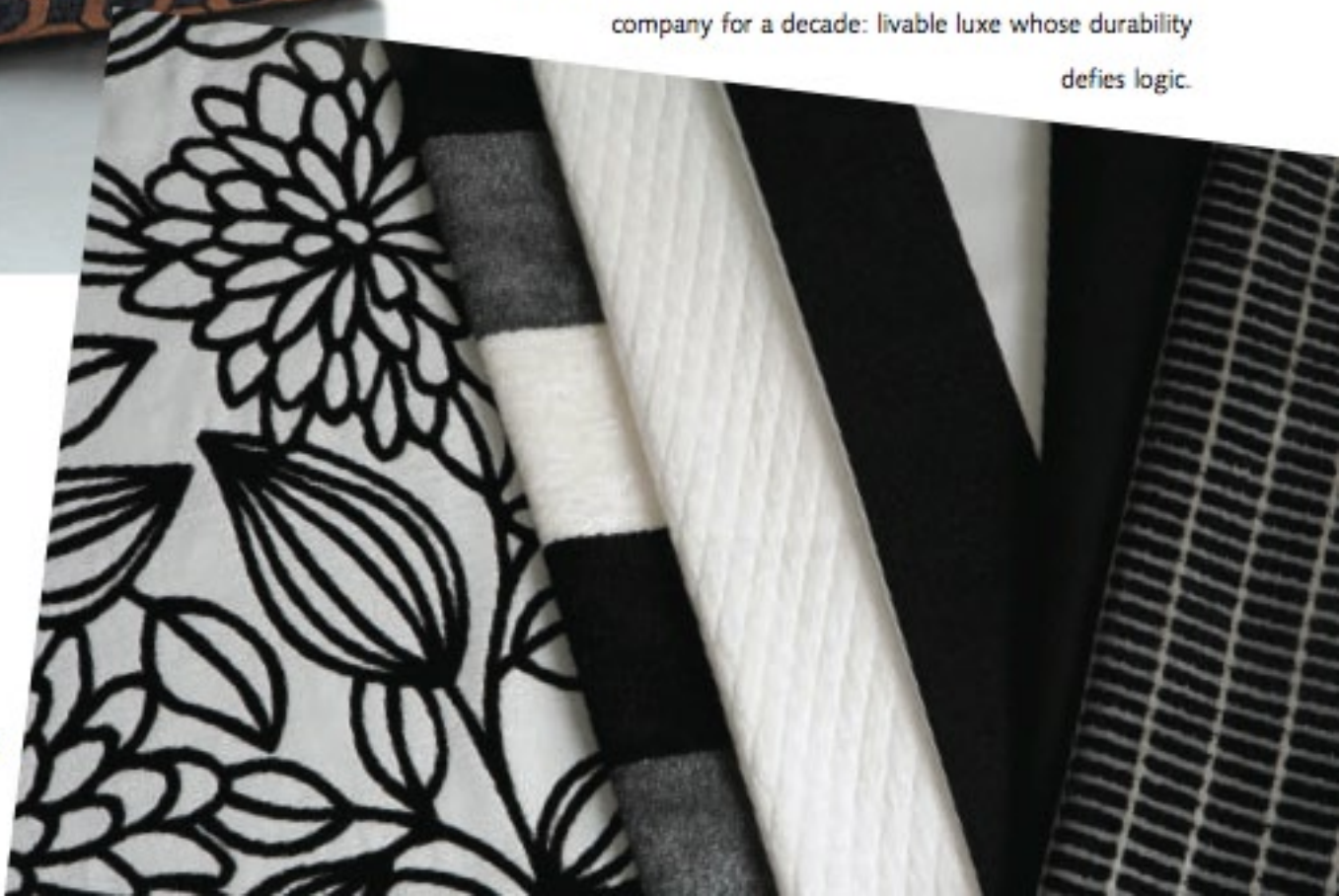


# Textiles



Inspired by photography's bravura, **Chella Textiles** celebrates its 10th anniversary by casting its own modern classics in the pure, stark beauty of black and white. The Shadows & Light Collection sheds a new, high-contrast light on Chella's solution-dyed acrylic jacquards, velvets, chenilles, matelasses and sheers—and invites a closer look at what has defined the company for a decade: livable luxe whose durability defies logic.

**Hunter Douglas Hospitality** introduces The Grand Tour, a new addition to the Evans & Brown Ampersand Collection. The Grand Tour is an eye-catching collection of bold prints and inviting colors made for upholstery, drapery, printed roller shade and top-of-bed designs. Each pattern and texture brings a warm tone and an earthy energy, making a sophisticated design statement.



CONTINUED ON PAGE 36