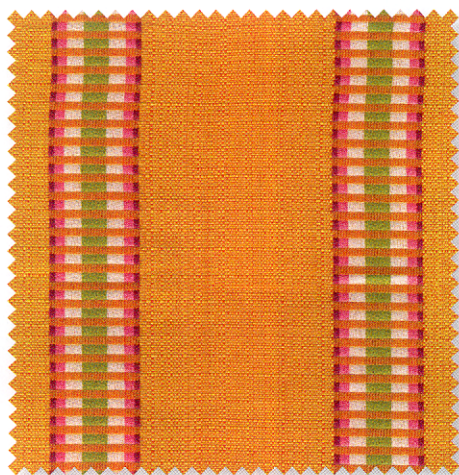




SUNNY SIDE UP

Outdoor fabric updated in trendy citrus shades



Designers know that outdoor areas are well suited

to playful fabrics in bright colors and loud patterns. With advances in sun-resistant and fade-proof textiles, custom cushions can be created with fabric that wouldn't look out of place in a design-forward interior space. "Donghia's original designs for Sunbrella are totally dependable, functional and colorfast fabrics," says Sherri Donghia of Donghia, Inc. "They provide our clients with sophisticated designs and incredibly saturated colors that have performance standards beyond your wildest expectations."

Clockwise from top left: Eolienne fabric in Mimosa, from the Lelièvre Paris collection, distributed by Old World Weavers, 310/657-8275, old-world-weavers.com. Aretha fabric in Persimmon/Sahara, by Chella Textiles, 602/273-0300, chellatextiles.com. Isla sidepost umbrella by Shadescapes USA, 866/997-4233, shadescapesusa.com. Big Island Sunbrella fabric in Yellow, by Donghia, 702/258-1616, donghia.com. Coral Reef Sunbrella fabric in Sunshine, from the Elements collection, by Old World Weavers, 310/657-8275, old-world-weavers.com. Coast chaise longue by Henry Hall Designs, 702/255-8267, henryhalldesigns.com, upholstered in Lokki fabric in Yellow, by Marimekko, marimekko.fi.

